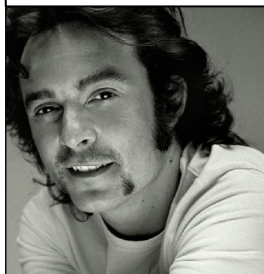


Planter Lau



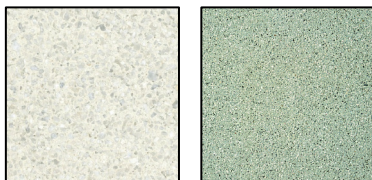
Designer: Arne Quinze

CHARACTERISATIONS

MATERIAL Reinforced cast stone
FIXING Free standing
WEIGHT 220 Kg



COLOUR

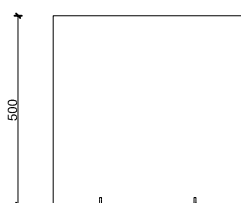


FINISHING

Acid etched
Structured

Waterproof and anti-graffiti protection

GEOMETRY



500

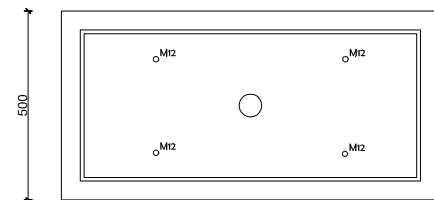
Side view



500

1000

Front view



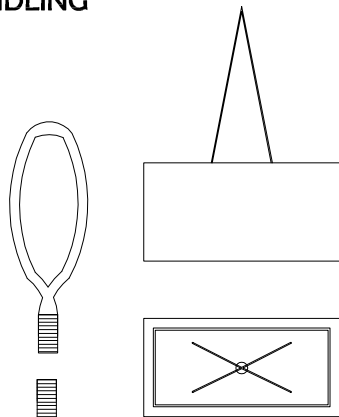
500


50 900 50

1000

Top view

HANDLING



Scale 0 cm  40 cm

