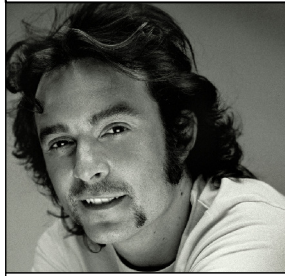


Bollard Lau-Scape



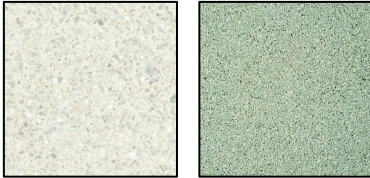
Designer: Arne Quinze

CHARACTERISATIONS

MATERIAL Reinforced cast stone
FIXING 1 M12 shelve
WEIGHT 130 Kg



COLOUR

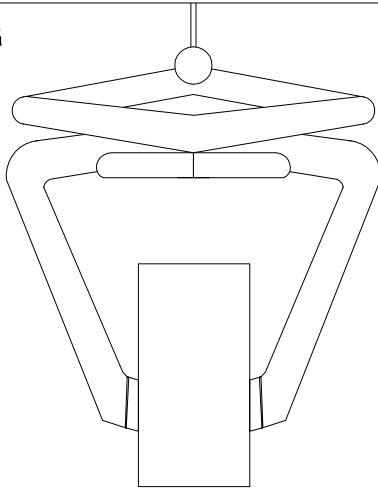


FINISHING

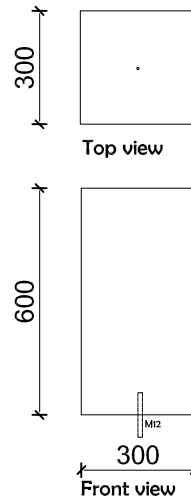
Acid etched
Structured

Waterproof and anti-graffiti protection

HANDLING



GEOMETRY



Scale 0 cm 40 cm

