

Pop Up Bench



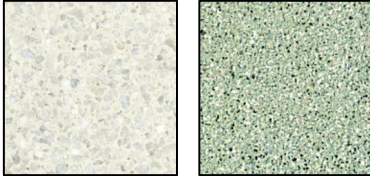
Designer: Roel Vandebek (BE)

CHARACTERISATIONS

MATERIAL Cast stone
FIXING Incorporated
WEIGHT 790kg



COLOUR

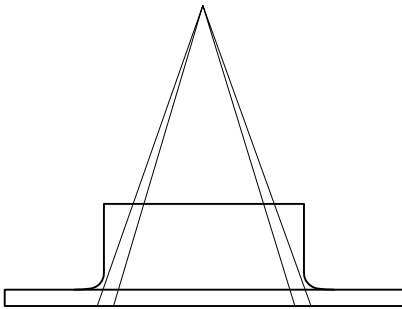


FINISHING

Acid etched

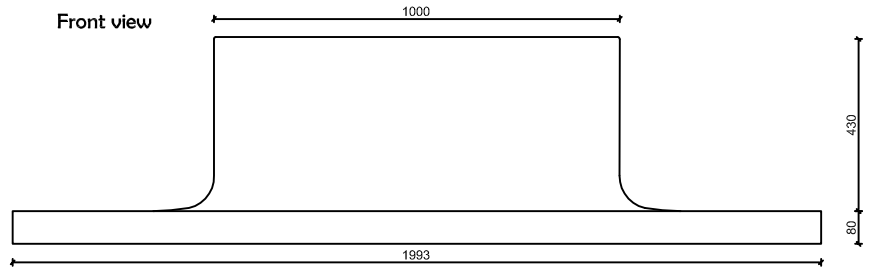
Waterproof and anti-graffiti protection

HANDLING



GEOMETRY

Front view



Side view

